

BRUNTON

RESIDENTIAL



ROSEWOOD GARDENS, KENTON, NE3

£325,000

BRUNTON

RESIDENTIAL





BRUNTON

RESIDENTIAL





BRUNTON

RESIDENTIAL

Brunton Residential are delighted to present this three-bedroom semi-detached house, situated on a corner plot in the sought-after Rosewood Gardens in Kenton.

The property offers three well-proportioned bedrooms, two of which benefit from fitted wardrobes, and a centrally located family bathroom. The home also features two reception rooms, a well-equipped, extended kitchen, a conservatory, and a private rear garden. Additional highlights include off-street parking for multiple vehicles and a handy workshop to the rear.

Located in Kenton, this home enjoys excellent access to local amenities, well-regarded schools, green spaces, and convenient transport links to Newcastle city centre and beyond.

BRUNTON

RESIDENTIAL



BRUNTON

RESIDENTIAL

Upon entering the property, you are welcomed into an entrance hall with stairs leading to the first floor landing and access to useful understair storage. From the hallway, there is a lounge featuring a large front aspect window, as well as a second reception room with wood-effect flooring, currently utilised as a dining room. Sliding doors from this room open into a rear conservatory, which in turn offers French doors leading out to the garden.

Located at the rear of the property, the well-equipped kitchen includes a range of floor and base units, integrated appliances, dual aspect windows, and a door providing further access to the rear garden.

Upstairs, the first floor hosts three well-proportioned bedrooms, two of which benefit from fitted wardrobes. The accommodation is completed by a fully tiled family bathroom comprising a bath, separate shower cubicle, washbasin, and WC.

Externally, the property offers a low-maintenance front garden and off-street parking for multiple vehicles. The rear garden is larger than average due to the corner plot, is privately enclosed and features a raised decking area, patio space, and a small lawned section.

Tenure

The agent understands the property to be freehold. However, this should be confirmed with a licenced legal representative.



BRUNTON

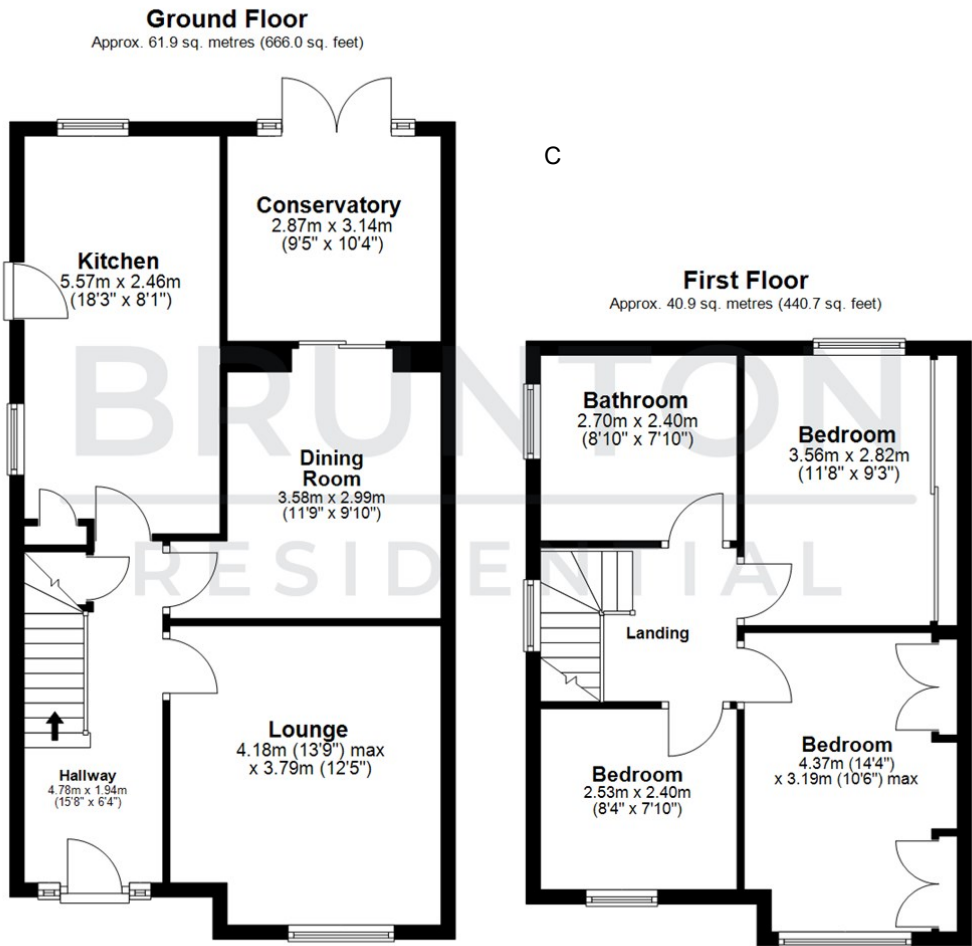
RESIDENTIAL

TENURE : Freehold

LOCAL AUTHORITY : Newcastle CC

COUNCIL TAX BAND : C

EPC RATING : D



All measurements are approximate and are for illustration only.
Plan produced using PlanUp.

